



## WAFER TYPE BUTTERFLY VALVE SERIES ACS STAINLESS STEEL BODY



The new series ACS stainless steel body design offers esthetic appearance, strength and a universal flange connection that match to several international standards. Its top flange is designed to ISO5211 for the direct mounting of gear operator or actuator which eliminates the cost of mounting bracket. The stainless steel body and disc provides good resistance to corrosion and abrasion. Automa offers various materials for the valve seat to meet the various requirements of customers. The fine finishing of seat surfaces and the polished edge of disc give good sealing. The PTFE is a self-lubricating polymer with a very low friction coefficient. This pin less design has eliminated the potential of leak through pin hole.

 ISO 9001:2008  CERTIFICATE NO. 0436-2002-AQ-RGC-RVA-Rev.1	 Pressure accessory  CERTIFICATE NO. 03-SKM-PED-B1-296225-00	 CE Notified Body No. 0575  CERTIFICATE NO. PED-D-69	 Det Norske Veritas Rules for Classification of Ships Det Norske Veritas Standards for Certification 2.9 No.5.794.40  CERTIFICATE NO. P-12613	 ISO 9001:2008  012  Certificate Number : 8711
---	---	---	---	--

## Dimensions in mm (UNIVERSAL) 1 1/2" TO 14"

SIZES		A	B	C	ØD1	ØD2		ØD3		a°	ØE1	ØE2	ØE3	ØE4	TORQUE (Nm)		Cv	WT. (KG)
DN	In.					PN10	PN16	PN10	PN16						PN10/16	PN 10		
40	1 1/2	136	69	32.0	42.6	105	105	23.0	23.0	45.00	50	7	65	35	13	13	19	2.2
50	2	156	80	42.0	52.9	120	120	24.0	24.0	45.00	50	7	65	35	14	15	31	2.7
65	2 1/2	162	89	44.7	64.5	136	136	28.0	28.0	45.00	50	7	65	35	15	17	55	3.2
80	3	170	95	45.2	78.8	152	152	24.5	24.5	45.00	50	7	65	35	22	23	87	3.6
100	4	185	114	52.1	104.3	182	182	27.0	27.0	22.50	70	10	90	55	37	40	140	5.0
125	5	207	127	54.4	123.3	212	212	26.0	26.0	22.50	70	10	90	55	58	62	224	6.9
150	6	216	139	55.8	156.0	238	238	26.0	26.0	22.50	70	10	90	55	94	102	328	8.6
200	8	256	175	60.6	202.5	293	293	26.0	26.0	15.00	102	12	125	70	174	192	572	15.5
250	10	248	203	65.6	250.8	357	357	30.5	30.5	15.00	102	12	125	70	286	323	837	26.8
300	12	280	242	76.9	301.6	400	400	25.0	25.0	11.25	102	12	125	70	429	490	1241	35.1
350	14	368	267	75.0	333.5	445	445	25.0	25.0	11.25	102	12	125	70	550	625	1564	45.6
400	16	400	297	85.7	389.6	515	525	28.0	31.0	11.25	140	18	175	100	755	846	2087	92.2
450	18	422	315	104.6	440.5	565	585	28.0	31.0	9.00	140	18	175	100	1012	1131	2681	122.0
500	20	480	348	130.3	491.6	620	650	28.0	34.0	9.00	140	18	175	100	1350	1431	3350	202.0
600	24	562	444	151.4	592.5	725	770	31.0	37.0	9.00	165	23	210	130	2111	2301	4907	230.0

Dimension 1 1/2" TO 14" included ANSI150, JIS10K, PN10/PN16 (EN1092-2, BS4504, DIN2501), AS 2129 TABLE E

Note : Cv = US Gallon per minutes

IF PTFE SEAT ONLY WITH PN10

14" AND ABOVE ONLY WITH SAND CASTING

16" TO 24" EN1092-2 PN10/16, DIN 2501 PN10/16, BS 4504 PN10/16.

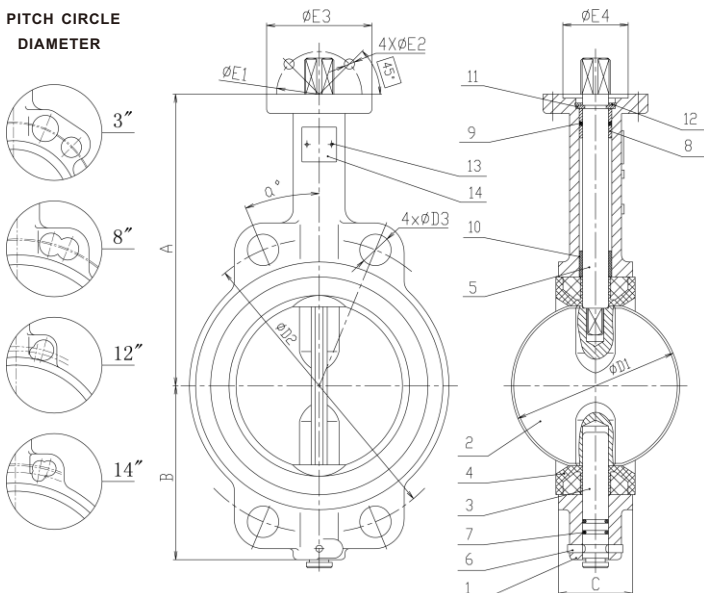
### Pressure Test

Working Pressure	1.0 MPa	1.6 MPa	10K	ANSI 125		ANSI 150
SIZE	1" - 24"	1" - 24"	1" - 24"	1" - 12"	14" - 24"	1" - 12"
Hydrostatic Seal	1.1 MPa	1.76 MPa	1.54 MPa	1.52 MPa	1.14 MPa	2.2 MPa
Test Body	1.5 MPa	2.4 MPa	2.1 MPa	2.1 MPa	1.55 MPa	3.0 MPa

### Working Temperature

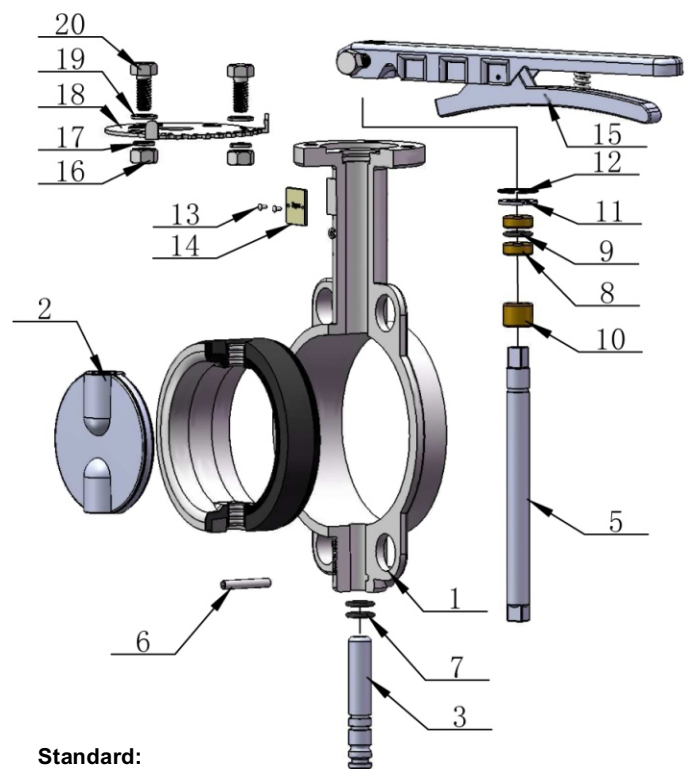
Temperature °C	-10 ~ 80	-15 ~ 140	-20 ~ 150	-20 ~ 180	-50 ~ 200
Seat Material	NBR	EPDM	VITON	PTFE	SILICONE

PITCH CIRCLE DIAMETER



## Materials

No.	PART	QTY.	MATERIAL
1	BODY	1	CF8M
2	DISC	1	CF8M / PTFE COATING / POLISHED
3	LOWER STEM	1	SS 316 / SS 431
4	SEAT	1	PTFE / EPDM / VITON
5	UPPER STEM	1	SS 316 / SS 431
6	LOCK PIN	1	SS 316
7	LOWER 'O' RING	2	NBR / EPDM / VITON
8	BUSHING	2	PTFE
9	'O' RING	1	NBR / EPDM / VITON
10	BUSHING	1	PTFE
11	HALF RING	2	SS 416
12	RETAINER RING	1	SPRING STEEL
13	RIVET	2	ALUMINIUM
14	NAMEPLATE	1	ALUMINIUM
15	HANDLE	1	SS 304 / SS 316
16	NUT	2	SS 304 / SS 316
17	SPRING WASHER	2	SS 304 / SS 316
18	INDICATOR	1	SS 304
19	WASHER	2	SS 304 / SS 316
20	BOLT	2	SS 304 / SS 316



### Standard:

Design Standard	: BS EN593
Face to Face	: BS EN558-1
Flange Connection	: EN1092-1 PN10/16 JIS B2210 10K : DIN 2501 PN10/16 ANSI B16.5 150 : AS 2129 TABLE E
Top Flange	: ISO 5211
Test Standard	: BS EN12266-1 / API 598



# AUTOMA

Automatic Valve & Accessories

TTS Valve Technologies Sdn. Bhd.

(A Member Company of Unimech Group Berhad)

11A Jalan USJ 1/31, 47600 Subang Jaya, Selangor, MALAYSIA

Tel : +60380231128 Fax : +60380233278

Email : info@ttsvalve.com Website : www.ttsvalve.com.my

The contents of this literature for informative purposes only. Automa is not responsible for suitability or compatibility of these products in relation to system requirement. For specific requirements, consult Automa or its distributors. Automa reserves the right to change or modify product design without prior notice.