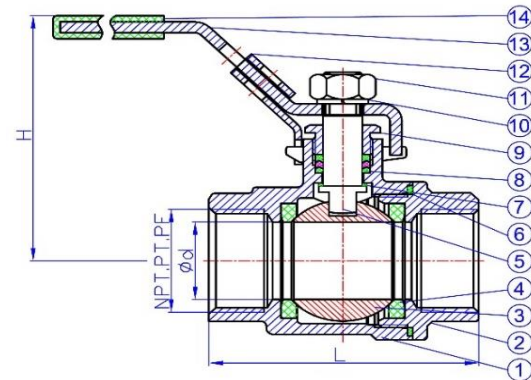
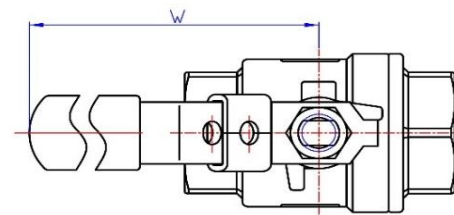
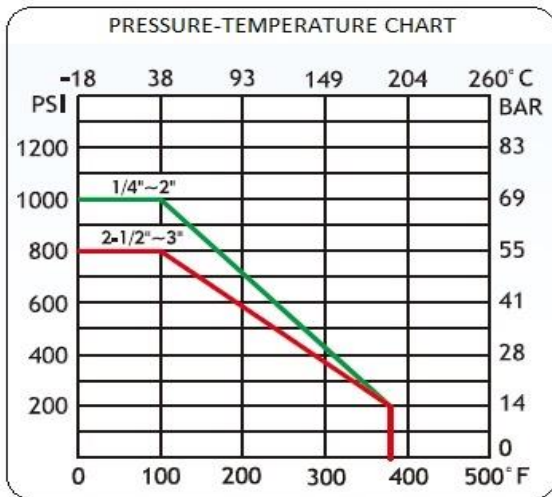




AUTOMA 2-piece body is full bore design with straight through flow. The body is made of investment casting and the valve is featured with blow-out-proof stem. Ball valve seat material is Reinforced Teflon (R-PTFE) for excellent chemical resistance and improved cycle life. Suitable for isolation applications for plumbing, Industrial Plant, Food Industries, Process Equipment, Water and Sewage Industries, Rubber and Palm Oil Industries etc.

SPECIFICATION:

- Full bore ball valve
- Investment casting body
- Blow-out-proof stem
- Working pressure up to 1000psi W.O.G
- Working temperature up to 180° C
- Pipe thread according to ISO 228 BSPP (G), options for NPT or BSPT



DIMENSIONS

SIZE		d	L	H	W
DN	G				
8	1/4	10	55	50	90
10	3/8	12	55	50	90
15	1/2	15	63	58	90
20	3/4	20	73	62	110
25	1	25	84	72	120
32	1-1/4	32	98	80	130
40	1-1/2	38	106	90	150
50	2	50	121	98	170
65	2-1/2	65	152	125	220
80	3	78	171	138	240

PRESSURE TEST

BODY	SEAT	
	by water	by air
105 kg/cm ²	80 kg/cm ²	6 kg/cm ²

MATERIAL LIST

NO.	PART NAME	MATERIAL	
		AT200	AT201
1	Body	CF8	CF8M
2	Cap	CF8	CF8M
3	Ball	CF8	CF8M
4	Seat	R-PTFE	
5	Stem	SS304	SS316
6	Gasket	PTFE	
7	Thrust Washer	PTFE	
8	Packing	PTFE	
9	Gland	SS304	
10	Spring Washer	SS304	
11	Stem Nut	SS304	
12	Locking Device	SS304	
13	Handle	SS304	
14	Handle Sleeve	PLASTIC	

The specification and dimensions are subject to change without prior notice!